

MAKING AN ARCHER'S GLOVE

THL Moira nicConnell the Strongbow

It's a fact. Your fingers need as much protection from your bow as the target does. Specifically, your fingers need protection from the string. You can probably find a finger tab or an archery glove at a sporting goods store. They might even fit properly and be made of leather heavy enough to protect your finger tips. But, if you happen to have small hands and pull a heavy-poundage bow—50 lbs at 28 inches or more—you might be better off making your own.

ARCHER'S GLOVE

SUPPLIES NEEDED

A square foot or so of flexible leather - soft deer skin for child or light poundage bows, light tooling leather for heavier bows

Waxed thread & leather needle

Scissors for cutting leather and paper

Leather punch and/or awl

A closure of some sort

Tape measure

Marker & straight edge

Paper for pattern

MEASUREMENTS

The wrist plus four inches

The index, middle and ring fingers of the string hand from the wrist to the finger tip with the hand flexed as if holding the bow string.

The circumference of the same fingers around the tip.

The length of the same fingers from the tip to half way down the second joint.

The width of the same fingers minus @ $1/8^{\text{th}}$ of an inch.

See figs. 1 thru 3



Fig 1



Fig 2

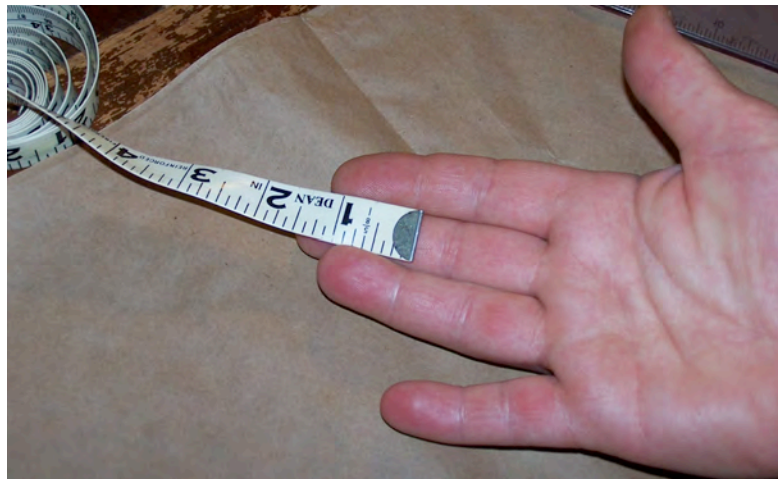


Fig 3

PATTERN

Transfer the measurements to paper. The wrist measurement is your base line. Draw a second line parallel to the first. You have a strip about $\frac{1}{2}$ inch wide although you can make it wider. Some people prefer a wrist band more like the cuff of a sleeve. About three inches from one end add a rectangle $2\frac{1}{2}$ inches wide by $1\frac{1}{4}$ inches deep. For the fingers start with a rectangle as wide as the circumference of the finger tips plus $\frac{1}{8}$ inch on each side and as deep as the measurement of the fingers half way down the second joint. Centered on a side with the circumference measurement, extend a strip as wide as the width of the fingers and as long as the length of the fingers plus $\frac{1}{2}$ inch-you can always trim off any excess later. You will wind up with three funky-looking capital Ts and something I can't name. Be sure to label the pattern pieces index, middle and ring.



Fig 4

ASSEMBLY

Cut out and transfer pattern pieces to leather. Cut out leather pieces and keep them together with the appropriate pattern pieces to avoid incorrect assembly.

Punch lacing holes as indicated in fig 5.



Fig 5

Lace fingers as shown in fig 6. I recommend doing this by putting the fingers on the appropriate fingers of the other hand. I'm right handed so I did the lacing using the fingers of my left hand to get the size correct. If you are making a glove for someone else, it's best if you have them handy. This should end with three fingers laced with the rough side of the leather on the inside.

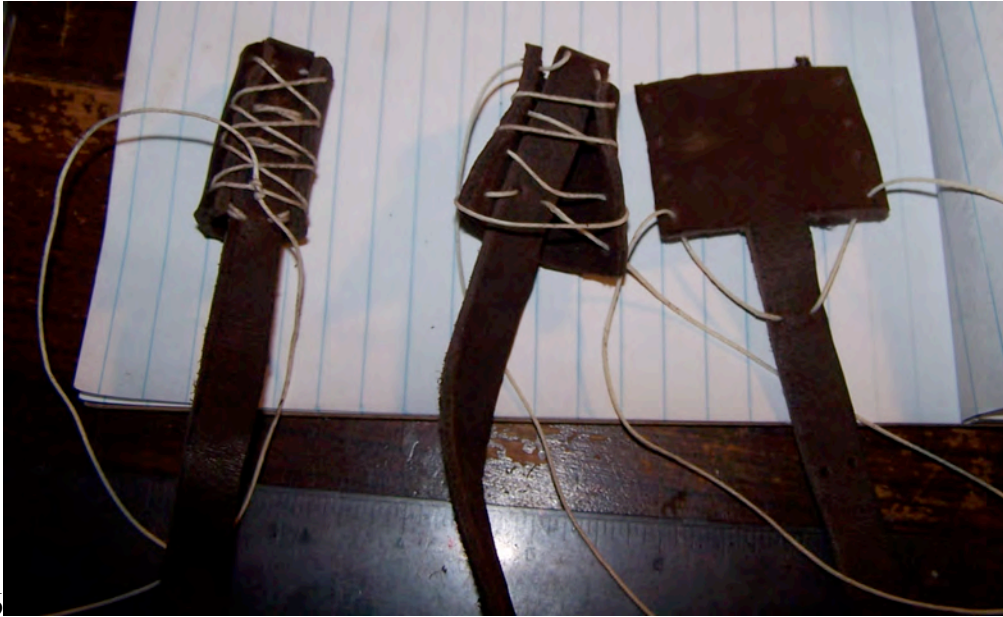


Fig 6

Attach the fingers to the wrist. Make sure to double check the finger length measurement before you punch lacing holes. See fig 7.

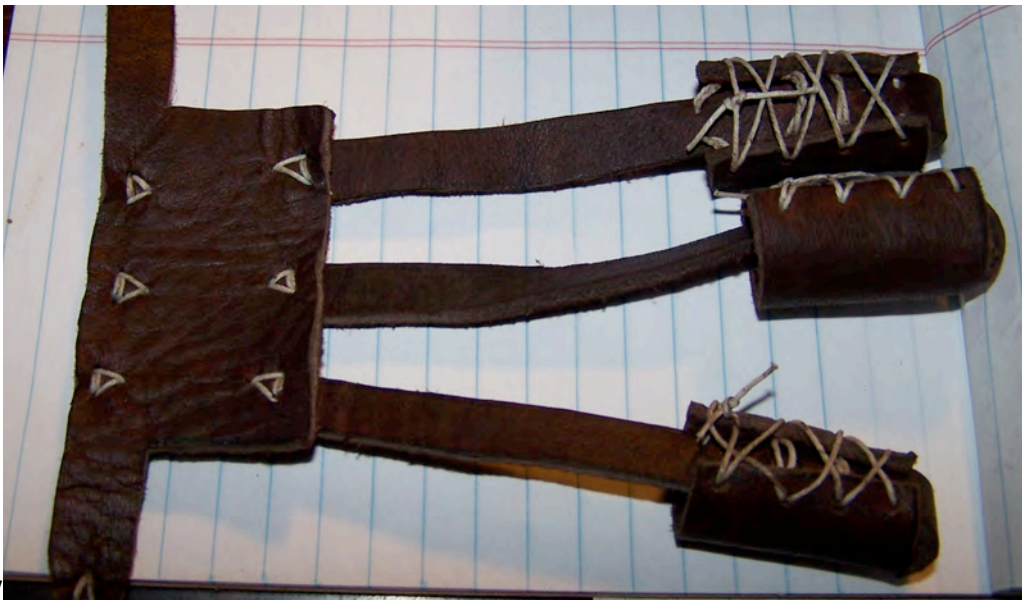


Fig 7

Attach the closure. Interlocking buckles are nice and easy to use, but you have to make sure the wrist strap is exactly the right length or either you can't buckle it or it falls off. Two d-rings or jump rings work well and adjust to cover minor variations. A button and a loop of jump cord also work well. Just remember, you'll be fastening this with your off hand and your teeth or begging help from other archers. See fig 8.



Fig 8

If you find the glove is a little snug, try soaking it in water and wearing it until it is dry.

FINGER TAB

SUPPLIES

You will need most of the same supplies aside from the thread, needle and awl. You may need to add a sharp craft knife.

PATTERN

Trace the string fingers and adjust the result as shown in figs 9 & 10. The circle will be cut out of the leather to slide the tab over the middle finger. If you are making a tab for yourself, trace the fingers of your off hand. I'm right-handed so I traced my left hand.



Fig 9

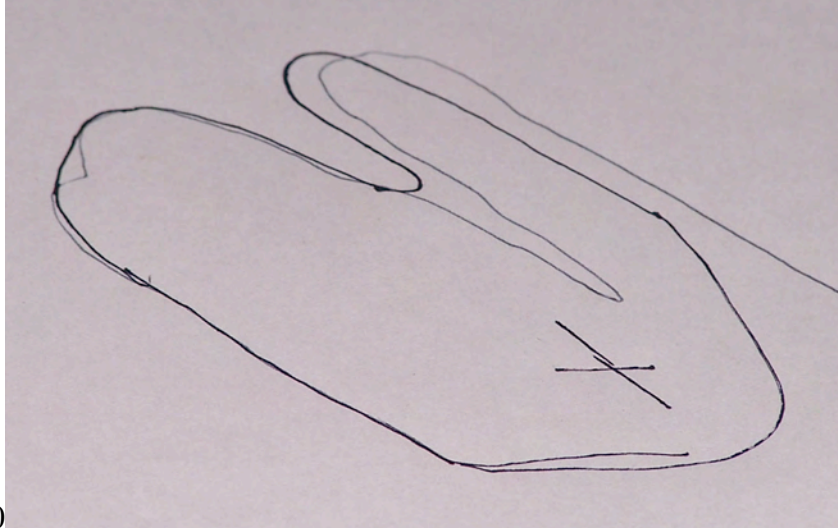


Fig 10

ASSEMBLY

Cut out pattern and transfer to leather. If you used your off hand to create your pattern, flip it over wrong side up and trace on the rough side of the leather. You want the smooth side of the leather against the string. Cut out and fit. Cut the finger opening a little small. You can always make it bigger. See fig 11.



Fig 11

There. No longer will you be hunting for the perfect archer's glove. See you on the range.